



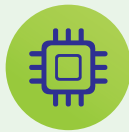
# Software Solutions Healthcare Information Management System

(HIMS)



AMT

# Why Choose Our HIMS?



**35+ Integrated Modules**



**Real-time Analytics and Reporting**



**Secure, Role based access**



**Web-based and Mobile compatible**

RHIS is a comprehensive Healthcare Information Management System dedicated to managing the automation needs of virtually every segment of your healthcare environment. Engineered on an open-systems environment, with more than 35 incorporated modules RHIS is capable of both retrieving and disseminating patient-specific clinical and financial data across the entire healthcare enterprise; RHIS is bifurcated broadly into Front Oce, Back Oce and additional modules and interfaces. Built on the latest open source standards, including JSF2.X, html5 and CSS3, web portability, mobile application compatibility





### Patient Registration:

The Patient Registration module captures information and creates records of all patients visiting the hospital through a unique patient identification number. It also captures a patient's biometric information, holds demographic, vital medical and financial details, all which are of long-term significance. This module interacts with printing devices for generation of embossed/computer-readable identification cards, adhesive labels and patient folder front sheets.

### Appointment Scheduling:

The Appointment Scheduling Module facilitates scheduling of appointments of patients with doctors. This module also allows doctors and nurses to view available time slots and allocate appointments accordingly. Appointments requests are received and scheduled/booked through direct interaction with patients or through telephone calls.

### Admission Discharge Transfer (ADT):

The ADT module is a part of patient management and takes care of admission, discharge and the transfer process for a patient. The ADT module tracks the movement, stay and care given to the patient. The module takes care of associated activities separately. Admission, Discharge and Transfer operate independently and interact with the relevant modules like patient billing, Bed/Wards management.

### **Accident and Emergency (A&E):**

The A&E module is meant for accident and emergency cases. It allows rapid registration with minimal required patient information. Facility of recording acute care details and notifications to Police and concerned departments are also a part of this module.

### **Bed Management:**

The Bed Management module allows hospital authorities to view and track bed occupancy related operations. This includes activities like Bed Enquiry, Bed Census, and Bed Maintenance. This module helps in classifying beds across categories such as ICU, Isolation, PICU, SICU, along with equipment attached to the beds such as Trolley, Bassinet, Monitoring Units, etc.

### **Ward Management:**

The Ward Management module helps Nursing or Ward Staff manage their wards. This module manages special units like ICU, O.T activity and also tracks services provided to patients in their respective wards during the Inpatient episode. This module deals with Consumable requests, issuing and returns; patient tracking, transfer requests and discharge.

### **Computerized Physician Order Entry (CPOE):**

The CPOE module allows orders for patient services to be entered and electronically transmitted from the point where the order originated, to the point of patient services thus minimizing delays/medical errors, eliminating lost paper, and making information accessible to other providers. Order entries include LaboratoryOrders,RadiologyOrdersandPharmacyOrders,BloodBankOrdersandMRD Orders for both inpatients and outpatients.

### **Nursing Workbench:**

The Nursing Workbench module is the core of the clinical and administrative systems of the RHIS. It provides comprehensive facilities for nurses to administer and maintain thorough patient care. It works in conjunction with the Doctor's Workbench and other modules/departmental functions of the RHIS. The module enables a view of patient details namely medical notes, laboratory and X-Ray results, orders from physicians pertaining to diets, patient allergies, drugs etc. All requests done to lab and radiology departments are made available to the nursing department.

### **OR/Operation Theater (OT):**

The OT module tracks all surgeries that take place in the hospital. It helps in scheduling the theatres, surgery teams, records all surgery details and all checklists associated with the surgery.

### **Labor & Delivery Room:**

The Labor and Delivery Module will allow all authorized users of the application to record patient pre-natal care details like first examination, laboratory test results, fetus biophysical profile, follow-up visit details and expected delivery date. The Labour Delivery Recovery Postpartum (LDRP) screen captures a Patients Details, Abdomen Examinations, and Labour Records, Different stages of Labour Details, Delivery Suite/Caesarean Details, Consumables and Equipment Details.

### **CSSD - Central Sterilized Supply Department:**

The Central Sterile Services Department's (CSSD) main function is to provide sterile items, linen, equipment to wards and OT's. The CSSD receives reusable equipment, linen from various wards and OT's for sterilization. This module interfaces with the Materials Management System - Inventory, Stock and Purchase.

### **Pharmacy:**

The Pharmacy module caters to the drug information system, dispensing and stock control functions of the pharmacy department. As a centralized drug information system, this module maintains complete drug formulary with information on the generic name, the trade name, standard dosages, contra-indications, interactions, physical and chemical characteristics, etc. It supports various drug classifications and indexes and interface with eBNF and other drug databases like Martindale, Drug DB.

### **Radiology Information System:**

The Radiology module offers the facility to cater to all the requirements of the Radiology Department. It provides for scheduling of appointment for examinations, examination processing, post-examination results reporting and film tracking. It enables receipt of Radiology Test requests from Clinics, Wards, Emergency Rooms and Operation theatres. There is an option for easy entry of test results or alternatively incorporate equipment interface to automate this process and reduce human errors.

### **Laboratory Information System:**

The Laboratory module is a sophisticated computer data management system designed to handle a large amount of data quickly and efficiently for all Pathology Laboratory disciplines. RHIS allows the independent operation of all laboratory sections while using a single database. This concept gives each department the flexibility to operate in the manner, which suits its needs, yet allows rapid recall of all data and test results for a particular patient. Automated laboratory equipment is linked to the computer, allowing results for the bulk of the routine analysis work to be transferred directly to the computer.

### **Housekeeping Services:**

The Housekeeping module provides the facility to manage and monitor the housekeeping activities in a hospital. The module facilitates management of day to day housekeeping activities like patient room preparation, sweeping/mopping floors, dusting furniture, cleaning fixtures/walls/ windows/ceilings/bathrooms, etc.

### **Linen & Laundry Services:**

This module is used to request various linen and laundry items/services for various departments in the hospital. The request can include date of delivery, quantity, frequency and special instructions with regard to the item or service. This module provides a dashboard to change the status of the request based on the service performed.

### **Dietary Services:**

Dietary services module is designed to assist the hospital kitchen in providing appropriate meals to inpatients. This module maintains a range of user definable menu and diet types. This module also facilitates diet counseling by the dietician by providing access to past medical history and laboratory test results.

### **Infection Control:**

The Infection Control Module provides a facility to filter an infected patient. A nurse can record the ventilator days, central line days, catheter days. A nurse can add infection and type of pathogen to the particular source of infection.instructions with regard to the item or service. This module provides a dashboard to change the status of the request based on the service performed.

### **Hemodialysis:**

The Haemodialysis Unit Module provides the facility to record vital signs of patients during the stages of Pre-dialysis, Dialysis and Post-Dialysis. This module also captures the details of peritoneal dialysis.

### **Physiotherapy:**

The Physiotherapy Module provides a clear picture of all the activities typically performed by the physiotherapist in real time. The module provides information of all the patient's visits, all personal tasks, pending insurance details, order status and pending documentation. The module also provides features like exercise manual, allergy recording, episode management, vital signs, referral management and clinical documentation. Personnel Management This module focuses on Personnel and is primarily responsible to track and manage all the human resourcing activities.

### **Blood Bank:**

The Blood Bank Module caters to the management of all bloodstock, donor records and laboratory and patient related operations. It also provides for registration to test request for blood group and cross matching followed by the entry and reporting of results.

### **Patient Services:**

The Patient Services module helps users from the Patient Services Department (viz managers, executives, etc.) By providing a complete set of hospital associated information and patient-oriented information. This module helps the user to liaison between patient /patient relatives and the hospital. One of the important tasks included in this module is the 'New-born Intimation' to the Ministry of Health. In short, this module is a one-stop shop for all precise information about the hospital. There are handy reports from this module which aid quick information transfer to desired locations whenever required.

### **Healthcare Check-up:**

The Healthcare Packages module is a group of procedures and services combined together and offered at discounted rates to administer a specific type of patient care over a period of time.

### **A Forms & Reports Designer:**

Forms and Reports designer are comprehensive tools provided for designing various forms and reports. The form designer tool is user friendly and easy to use. Various analyzable components help in deriving information from a set of data; which include options to import images, usage of a rich text editor, defining tab controls are also provided.

The report designer helps an organization to define run-time reports. The structuring and developing of reports are very flexible. User can structure reports by specifying / choosing columns and view outputs as required, various graphical interfaces are also provided.

### **Payroll:**

Payroll is a comprehensive module, which integrates personnel data management and payroll processing as a unified solution. It collates data with respect to Inductions, Attritions, Salary revisions and Leave transactions to automatically feed all inputs for monthly payroll processing. The objective is to streamline and centralize the management of personnel records and avoid redundancy and inaccuracies in employee data that is critical for payroll processing thus vitally reducing the payroll cycle time.

### Time, Attendance & Scheduling:

The Time and Attendance management module provides all the functionalities to track and manage staff attendance details. The system tracks details of each employee from log-in to log-out. Standard deviations from organization objectives with respect to laid Human Resources policies can be obtained at any point in time. The scheduling module is built to generate duty roster for all applicable staff within an organization. It integrates with the Time and Attendance Management Module. Rules specific to hierarchical structure can be stipulated and shifts generated accordingly.

### BI & Statistical Reporting:

BI is a real-time, web-based, client-server application that is developed using state-of-the-art J2EE technology. BI provides accurate reporting on a variety of databases. These supported databases include relational databases, such as Oracle, Sybase, SQL Server, and so on, and OLAP servers such as Essbase, IBM Cubeview, and others. The reporting capabilities enable users to not only build highly customized reports based on their existing data but also analyze and retrieve valuable information and business trends from the data stored in their databases.

### Patient Billing:

The Patient Billing and Accounting module is for billing the patient for services used by him in the hospital, the patient is billed according to the business rules of the hospital, which are maintained and validated from this module. It works in conjunction with Insurance, AR and GL module.

### Insurance and Contracts Management:

Insurance Module provides the facility to record contracts between the hospital and insurance companies and define eligibility criteria for billing the patient. It records and validates all coverage and non-coverage rules and rates to be applied based on the agreement between the hospital and the insurance companies. This module forms the basis of a contract management system.

### **Finance:**

The Finance module caters to the entire gamut of accounting practices that is conducted in a typical hospital set up/ environment - right from the time the patient walks in to the time the organization presents its profit and loss accounts. This module provides for all the relevant functionalities while emphasizing on user friendliness and ease of operation.

### **Procurement:**

The Supply & the Procurement modules mainly deal with purchase documents or through an elaborate tendering cycle. The complete purchase cycle from the purchase requisition till receipt of goods are comprehensively covered here. Certain salient features such as sorting of vendors based on prices, configurable payment & delivery terms are also present. Sales & distribution activities, which are part of the supply module, are well defined in the module.

### **Inventory:**

This module manages all the back office inventory related operations. It allows items to be marked as inventory and helps in maintaining the reorder level. The module has the built-in functionality to throw alerts/e-mails and maintain the lowest inventory level across the clinical facilities and housekeeping facilities.

### **Fixed Assets:**

This module lays its focus on assets classified under 'Fixed assets' category and helps in deciding the depreciation period and associated methods. Maintenance of assets like insurance management, Warranty management and AMC management is catered to in this module. Reports such as Asset register reports, Sale/Write off reports, Revaluation reports, Asset forecasting reports can be provided.



”

Trusted by hospitals.  
Powered by innovation.

“

**AMT**

Plot No-A815, MIDC Industrial Area,  
Kopar Khairane, Navi Mumbai,  
Maharashtra - 400709.

Office: +91-9322673077|+91-8976074090

Office: +91-8080321777|+91-9321548914

Web : [www.amtmedicals.com](http://www.amtmedicals.com)

Email: [info@amtmedicals.com](mailto:info@amtmedicals.com)